



Foundation: \$595 (incl. GST)

*Learn the fundamentals of adult learning
and training of the manual handling of people*

Advanced: \$750 (incl. GST)

*Includes competency assessment component
suitable for management and supervisory staff*

FACILITATED BY HELEN GRACZYK

TRAIN THE TRAINER

MANUAL HANDLING OF PEOPLE

APRIL 27TH, 28TH & 29TH 2021

AKADIA



WWW.AKADIA.COM.AU

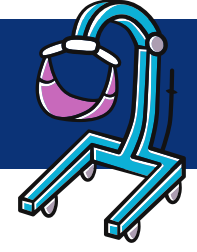
Time: 9am - 4pm each day

Location: Akadia, 18 Hanna Court, Kearney's Spring 4350

All training resources provided

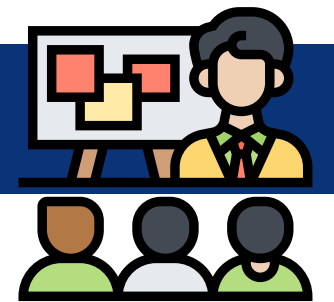
Morning tea and lunch provided

DAY ONE: MANUAL HANDLING FUNDAMENTALS



- Workplace health and safety for direct care workers
- The importance of safe manual handling practices
- Legislation that guides risk management
- Tips for passing on knowledge to work colleagues
- Understanding how the mechanical bed works
- Practical manual handling procedures
 - On the bed tasks - one and two person assist
 - Off the bed tasks - one and two person assist
 - Use of a wide range of manual handling aids

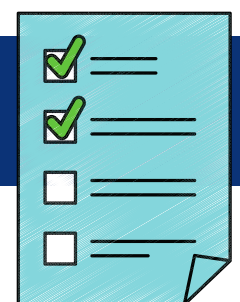
DAY TWO: ADULT LEARNING ESSENTIALS



- Understanding adult learning
- Group training methods
- Training one-on-one
- Techniques for training the manual handling of people
- Skills for assessment and correction
- Documentation requirements and competency checklists

FOUNDATION

DAY THREE: COMPETENCY ASSESSMENT



- Peer reviewed practical exercises
- Independent competency assessment testing participants' knowledge and techniques
- Feedback and review

ADVANCED

MEET THE TRAINER

- Helen Graczyk is an enrolled nurse with over 30 years' experience in Manual Handling training, most recently at one of Queensland's major hospitals.
- Helen is a member of the Australian Association for the Manual Handling of People (AAMHP).



For more information call 07 4659 5662 or email admin@akadia.com.au

akadia.com.au